



Phi • lan • thro • py-

(fi lan` thro pē) From the Greek word, philanthrāpía, meaning **love** for mankind. The **effort** or inclination to increase the **WELL-BEING** of all humankind and creatures through the **giving** of one's time, talents, or money
FOR THE GREATER

good.

Community Foundation of Greater South Wood County has been building endowed assets to support the changing needs of our community since 1994. With support from the Barker Mead Fund in 2005, the Foundation created seven Progress Funds to build charitable assets at the local level.

The purpose of each permanently endowed fund is to support unique community opportunities as identified by residents of Rome, Nekoosa, Pittsville, Port Edwards, Rudolph, Vesper, and the Wisconsin Rapids/Grand Rapids/Biron areas. To date, Progress Fund committees have granted well over \$20,000 to local projects.

Ongoing fund raising efforts continue today. This type of endowment building allows each local donation to remain local, and future grants are designated to local community improvement projects for generations to come. It's a grass roots method to ensure that each area is retaining and building its permanent charitable assets for the good of its community – forever.

Plant the Seed – Build a Strong Community!

Rome Progress Fund

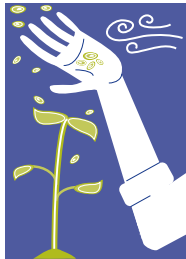


Rome Community Vision:

- Rome strives to be a diverse community, offering a variety of residential living, year-round recreation, and business opportunities, with an emphasis on environmental preservation.

The Community Progress Initiative began in 2004 and continues today as a bold program in greater South Wood County to create vibrant communities with prosperous local economies.

Residents of Rome, Nekoosa, Pittsville, Port Edwards, Rudolph, Vesper, and the Wisconsin Rapids/Grand Rapids/Biron areas have come together – creating community vision statements, empowering entrepreneurs, building the area's human and financial resources, motivating new leaders, fostering collaboration, and inspiring community spirit and pride.



**COMMUNITY
FOUNDATION**
GREATER SOUTH WOOD COUNTY

Community Foundation
of Greater South Wood County
478 East Grand Avenue
Wisconsin Rapids, WI 54494
Phone 715.423.3863
Website: www.cfswc.org

**Plant the seed –
Build a strong community!**

For **good.** For **ever.**™

© 2007-2008

make it happen!
**Community
Progress**
INITIATIVE

Plant the Seed... Build a Strong Community!

Here is my donation.



YES, I want to support the Rome Progress Fund.

Name _____

Address _____

City, State, Zip _____

Daytime Phone _____

Email Address _____

My \$_____ is enclosed.

In memory of _____

In honor of _____

Please send notification of memorial/honorarium to _____

I would like more information; please contact me.

Please make checks payable to:
Rome Progress Fund

Mail to:
Community Foundation of Greater South Wood County
478 East Grand Ave.
Wisconsin Rapids, WI 54494

Thank you for your contribution!



What is the Rome Progress Fund?

Established in 2005, the Rome Progress Fund is an endowment fund in which the total of all combined donations go into a permanent account. These donations are invested for the long-term for a common purpose: **To support unique community improvement opportunities in the Rome area.**

The principal of the fund is never spent; it is "endowed" and available for growth forever. As the fund earns interest and dividends over time, a portion of the earnings is distributed annually in the form of grants that support community improvements for the Rome area.

Who can apply for a grant?

Requests for grants that will benefit the Rome area may be submitted by community groups, local 501c3 organizations, and locally recognized nonprofits.

How are grant distributions determined?

The Rome Progress Fund Committee is made up of local Rome citizens who review applications at regular intervals. Based upon grant guidelines, they determine which grant requests to fund. Grant guidelines are available online at www.cfswc.org, or you may request the guidelines from Community Foundation of Greater South Wood County, (715) 423-3863.



Community Progress is all about improving our communities, now and for the future. You can help build a strong Rome community for many generations to come – by making contributions to the Rome Progress Fund.

Buy a Brick Campaign

Take part in the Rome Progress Fund's "Buy a Brick Campaign." Honor and memorialize your loved ones by ordering an engraved brick in Veterans Park in the Alpine Business Village. Two sizes are available and all proceeds benefit the Rome Progress Fund.



How can I help? Where do I donate?

You may help by donating directly to the Rome Progress Fund. Common types of contributions are: cash; memorial or honorary gifts; appreciated securities; bequests; life insurance, or 401K funds.

Your contribution to the Rome Progress Fund is pooled, professionally invested, and administered by Community Foundation of Greater South Wood County.

Every gift counts, whether large or small, and will be here forever for the betterment of your community. For example, with a principal balance of \$40,000, grant distributions totaling approximately \$2,000 will be available each year for community improvement projects. As time goes on, and the fund's principal balance increases, so will the amount of grant distributions each and every year!

To donate, you may use the attached form, or contribute online. To buy a brick, get information at www.cfswc.org.