

make it happen !

# Community Progress

INITIATIVE

## Youth Team





“Being with the Teen Leadership Program has been a great opportunity for me, and if I had the chance, I would do it all over again. I have made many good friends and have learned how to talk to new people and I learned that I can make a difference in my community and in the lives of others.” Ashley Tuttle, 2007 South Wood County Teen Leadership graduate.

Pictured Above: Participants in the South Wood County Teen Leadership Program, pose with Tom Reichert, Wood County Sheriff

make it happen !  
**CommunityProgress**  
 INITIATIVE

Program	Narrative Summary
Youth Team	<p>The Community Progress Youth Team started in January 2005 at a rally for young people in south Wood County and Rome, grades 5 through 12. Over 85 students attended, and were involved in research, planning, and organizing projects to build community pride and increase the ability of young people to have a positive impact on the future of their community. One of the projects was a Campus Clean-Up held at 13 schools throughout South Wood County. Approximately 1,500 students participated.</p> <p>In November 2005, Community Progress Initiative staff began researching the implementation of a Teen Leadership program for South Wood County high school sophomores. An Advisory Committee was formed and is comprised of 1 high school senior, 1 college student, and 9 adults from the South Wood County area.</p> <p>Teen Leadership South Wood County was modeled after a youth leadership program in Portage County and is designed to provide a unique learning experience for high school sophomores that will develop key leadership skills through a hands-on learning environment.</p> <p>The class met monthly for 9 sessions, beginning in September 2006. Using the guiding principles from 7 Habits of Highly Effective Teens, sessions focused on different areas of community involvement while addressing specific leadership skills. Twenty-six sophomores from public and parochial South Wood County schools participated in the Teen Leadership Program, where they learned and demonstrated leadership building skills through three main program areas: Interactive Sessions, Leadership Shadowing, and a Community Project focusing on senior citizens. New relationships were established among participants that crossed traditional school-district boundaries, thereby increasing collaboration and social capital. Program participants graduated in May 2007.</p>

Program	Outcome	Activity	Output/ Indicators - Cumulative			
			Year 1	Year 2	Year 3	Total
Youth Team	To increase engagement of youth in the community, allowing them to articulate and act on community needs, through active participation in the Community Progress Initiative.	<ul style="list-style-type: none"> <li>- Meetings <ul style="list-style-type: none"> <li>* Advisory Planning Meetings</li> <li>* Youth Meetings (including Rally)</li> </ul> </li> <li>- Youth Participants</li> <li>- Invite young people to participate in Industry Cluster Networks, Progress Teams, Fund Committees, Boot Camps and other Initiative groups/activities <ul style="list-style-type: none"> <li>* Youth participating in groups/activities</li> </ul> </li> <li>- Implement individual action items <ul style="list-style-type: none"> <li>* Activities</li> <li>* Youth Participants</li> </ul> </li> <li>- Encourage Youth Initiatives <ul style="list-style-type: none"> <li>* Grant applications</li> <li>* Grant awards</li> </ul> </li> </ul>	4	3		7
			3	2		5
			104	19		123
			18	6	39	63
				1		1
				1,500		1,500
				1		1
				1		1
	To motivate emerging young leaders to drive positive change by increasing their leadership skills and fostering new relationships across school boundaries.	<ul style="list-style-type: none"> <li>- Offer Teen Leadership course <ul style="list-style-type: none"> <li>* Advisory Planning Meetings</li> <li>* Sessions</li> <li>* Youth Participants</li> <li>* Graduates</li> </ul> </li> <li>- Community Improvement Projects <ul style="list-style-type: none"> <li>* Create and develop community project</li> <li>* Projects completed</li> </ul> </li> <li>- Encourage and increase youth leadership in community organizations <ul style="list-style-type: none"> <li>* Visits to community/business organizations</li> <li>* Peer to peer presentations about community organizations</li> </ul> </li> </ul>		17	14	31
					7	7
					79	79
					2	2
					11	11
					3	3

Program	Outcome	Activity	Output/ Indicators - Year 1				
			1st Quarter (4/1-6/30/04)	2nd Quarter (7/1-9/30/04)	3rd Quarter (10/1-12/31/04)	4th Quarter (1/1-3/31/05)	Total
Youth Team	To increase engagement of youth in the community, allowing them to articulate and act on community needs, through active participation in the Community Progress Initiative.	<ul style="list-style-type: none"> <li>- Meetings               <ul style="list-style-type: none"> <li>* Advisory Planning Meetings</li> <li>* Youth Meetings (including Rally)                   <ul style="list-style-type: none"> <li>- Youth Participants</li> </ul> </li> </ul> </li> <li>- Invite young people to participate in Industry Cluster Networks, Progress Teams, Fund Committees, Boot Camps and other Initiative groups/activities               <ul style="list-style-type: none"> <li>* Youth participating in groups/activities</li> </ul> </li> <li>- Implement individual action items               <ul style="list-style-type: none"> <li>* Activities</li> <li>* Youth Participants</li> </ul> </li> <li>- Encourage Youth Initiatives               <ul style="list-style-type: none"> <li>* Grant applications</li> <li>* Grant awards</li> </ul> </li> </ul>			3	1	4
						3	3
						104	104
				16	16	18	18
	To motivate emerging young leaders to drive positive change by increasing their leadership skills and fostering new relationships across school boundaries.	<ul style="list-style-type: none"> <li>- Offer Teen Leadership course               <ul style="list-style-type: none"> <li>* Advisory Planning Meetings</li> <li>* Sessions</li> <li>* Youth Participants</li> <li>* Graduates</li> </ul> </li> <li>- Community Improvement Projects               <ul style="list-style-type: none"> <li>* Create and develop community project</li> <li>* Projects completed</li> </ul> </li> <li>- Encourage and increase youth leadership in community organizations               <ul style="list-style-type: none"> <li>* Visits to community organizations</li> <li>* Peer to peer presentations about community organizations</li> </ul> </li> </ul>					

Program	Outcome	Activity	Output/ Indicators - Year 2				
			1st Quarter (4/1-6/30/05)	2nd Quarter (7/1-9/30/05)	3rd Quarter (10/1-12/31/05)	4th Quarter (1/1-3/31/06)	Total
Youth Team	To increase engagement of youth in the community, allowing them to articulate and act on community needs, through active participation in the Community Progress Initiative.	<ul style="list-style-type: none"> <li>- Meetings <ul style="list-style-type: none"> <li>* Advisory Planning Meetings</li> <li>* Youth Meetings (including Rally) <ul style="list-style-type: none"> <li>- Youth Participants</li> </ul> </li> </ul> </li> <li>- Invite young people to participate in Industry Cluster Networks, Progress Teams, Fund Committees, Boot Camps and other Initiative groups/activities <ul style="list-style-type: none"> <li>* Youth participating in groups/activities</li> </ul> </li> <li>- Implement individual action items <ul style="list-style-type: none"> <li>* Activities</li> <li>* Youth Participants</li> </ul> </li> <li>- Encourage Youth Initiatives <ul style="list-style-type: none"> <li>* Grant applications</li> <li>* Grant awards</li> </ul> </li> </ul>	2	1			3
			2				2
			19				19
			6	6	6	6	6
			1				1
			1,500				1,500
			1	0	0	0	1
			1	0	0	0	1
	To motivate emerging young leaders to drive positive change by increasing their leadership skills and fostering new relationships across school boundaries.	<ul style="list-style-type: none"> <li>- Offer Teen Leadership course <ul style="list-style-type: none"> <li>* Advisory Planning Meetings</li> <li>* Sessions</li> <li>* Youth Participants</li> <li>* Graduates</li> </ul> </li> <li>- Community Improvement Projects <ul style="list-style-type: none"> <li>* Projects planned</li> <li>* Projects completed</li> </ul> </li> <li>- Encourage and increase youth leadership in community organizations <ul style="list-style-type: none"> <li>* Presentations to community organizations</li> <li>* Youth participation as leaders/members of community organizations</li> </ul> </li> </ul>	0	3	5	9	17



Program	Source	Comments/Observations	Outcome - Benefit/Change				
			Behavior	Knowledge	Skills	Attitudes	Status
Youth Team	Ashley Tuttle Nekoosa, WI South Wood County Teen Leader	"Being in the Teen Leadership Program has been a great opportunity for me. I have made many new friends and I've learned that I can make a difference in my community and in the lives of others."	X			X	
	Jena Vruwink Rudolph, WI South Wood County Teen Leader	Re: History & Entrepreneurism session Do you know why this area is referenced as the "Heart of Wisconsin?" At Glacial Lake Cranberries, Inc., Mary Brazeau Brown explained, when the glacier went through it left a mark in which the communities form the shape of a heart.		X		X	
	Luke Black Wisconsin Rapids, WI South Wood County Teen Leader	Re: Education, Diversity & Conflict session "Education is very important and we understand now how it is managed. Diversity is a good thing and adds to the character of the community. Conflict is always present but can be resolved quickly and well."		X		X	
	Kevin Bengsch Wisconsin Rapids, WI South Wood County Teen Leader	"I would (recommend the SWC Teen Leadership Program to incoming sophomores) because if you want to have fun it is, and if you want to learn you will, and if you want to do both at the same time, join SWCTL Program."	X	X		X	
	Anonymous South Wood County Teen Leader	Re: Recommending the program to incoming sophomores. "It is a great opportunity and will open your eyes to the community."		X			X
	Anonymous South Wood County Teen Leader	Re: Best advice received while participating in the SWC Teen Leadership Program. "Go outside of your comfort zone. I hated it at first, but it only made me a better and stronger person, and as a result I met more people."	X		X	X	

make it happen !

# Community Progress

INITIATIVE

## Community Funds





“When I want to plant a garden, I must invest in the seeds. I don’t expect my neighbors or strangers to buy the seeds for me. It is our responsibility to strengthen this community.” Ruth Moody, Nekoosa Area Fund chair.

Picture Above: The Rudolph Progress Fund held a fundraiser during the Great American Bicycle Adventure Along Wisconsin River.

make it happen !  
**CommunityProgress**  
 INITIATIVE

Program	Narrative Summary
Community Funds	<p>Designed to foster self-reliance, retain and build wealth, and empower local citizens; individual community-based charitable funds have been established for Nekoosa, Pittsville, Port Edwards, Rome, Rudolph, Vesper and the Wisconsin Rapids area through Community Foundation of South Wood County. Committees of area residents are supported in providing leadership to each fund; including grantmaking for local community opportunities and improvements. Barker Mead Fund, through Community Foundation of South Wood County, matched up to \$20,000 in donations and provided \$5,000 in grant money to each fund. Six of the seven funds met the \$20,000 match opportunity creating a \$40,000 endowed fund in each community. The total amount raised by all communities, including the match, was \$257,549.</p> <p>These funds began making grants in April 2005. During the period of April 2005-April 2007, a total of 36 grants were made, with a total amount of \$27,708 awarded. Grant awards ranged from \$44 to \$2,100.</p>

Program	Outcome	Activity	Output/ Indicators - Cumulative			
			Year 1	Year 2	Year 3	Total
Community Funds	To create individual community charitable funds which provide a permanent source of funding to support local projects that improve life for community residents.	- Announce fund opportunity * Media coverage	4	7		11
	To foster self-reliance and empower local citizens to determine charitable needs and award grants that support community needs.	- Create seven active and knowledgeable Community Fund Advisory Committees * Fund Committees * Fund Committee members (average) - Establish training schedule * Training sessions * Participants - Encourage local community improvement * Grant applications * Grant awards	7 45 3 40	7 45 8 83	7 41 6 27	7 44 17 150
	To increase charitable assets for the benefit of individual communities.	- Create Community Funds * Funds created * Donors - Create Community Fund brochures * Community brochures * Brochures available - Announce Barker-Mead matching opportunity  * Media coverage - Encourage additional matching opportunities  * Additional match opportunities generated	7 15	297 7 15,000	357 7	7 669 7 15,000
	To increase knowledge and presence of CFSWC within individual communities.	- Publicize Community Funds * Media coverage	4	14	44	62

Program	Outcome	Activity	Output/ Indicators - Year 1				
			1st Quarter (4/1-6/30/04)	2nd Quarter (7/1-9/30/04)	3rd Quarter (10/1-12/31/04)	4th Quarter (1/1-3/31/05)	Total
Community Funds	To create individual community charitable funds which provide a permanent source of funding to support local projects that improve life for community residents.	- Announce fund opportunity * Media coverage	3	1	0	0	4
	To foster self-reliance and empower local citizens to determine charitable needs and award grants that support community needs.	- Create seven active and knowledgeable Community Fund Advisory Committees * Fund Committees * Fund Committee members (average number) - Establish training schedule * Training sessions * Participants - Encourage local community improvement * Grant applications * Grant awards			7 45	7 45	7 45
	To increase charitable assets for the benefit of individual communities.	- Create Community Funds * Funds created * Donors - Create Community Fund brochures * Community brochures * Brochures available - Announce Barker-Mead matching opportunity  * Media coverage - Encourage additional matching opportunities  * Additional match opportunities generated		0 1	7 5	0 9	7 15
	To increase knowledge and presence of CFSWC within individual communities.	- Publicize Community Funds * Media coverage	3	1	0	0	4

Program	Outcome	Activity	Output/ Indicators - Year 2				
			1st Quarter (4/1-6/30/05)	2nd Quarter (7/1-9/30/05)	3rd Quarter (10/1-12/31/05)	4th Quarter (1/1-3/31/06)	Total
Community Funds	To create individual community charitable funds which provide a permanent source of funding to support local projects that improve life for community residents.	- Announce fund opportunity * Media coverage	3	1	3	0	7
	To foster self-reliance and empower local citizens to determine charitable needs and award grants that support community needs.	- Create seven active and knowledgeable Community Fund Advisory Committees * Fund Committees * Fund Committee members (average number) - Establish training schedule * Training sessions * Participants - Encourage local community improvement * Grant applications * Grant awards	7 47 8 83 6 6	7 47 0 0 5 5	7 42 0 0 5 5	7 42 0 0 4 3	7 45 8 83 20 19
	To increase charitable assets for the benefit of individual communities.	- Create Community Funds * Funds created * Donors - Create Community Fund brochures * Community brochures * Brochures available - Announce Barker-Mead matching opportunity  * Media coverage - Encourage additional matching opportunities  * Additional match opportunities generated	7 42 4 9,000 0 0	137 2 4,000 1 1	100 1 2,000 5	18 0 0 6	7 297 7 15,000 12 2
	To increase knowledge and presence of CFSWC within individual communities.	- Publicize Community Funds * Media coverage	0	3	4	7	14

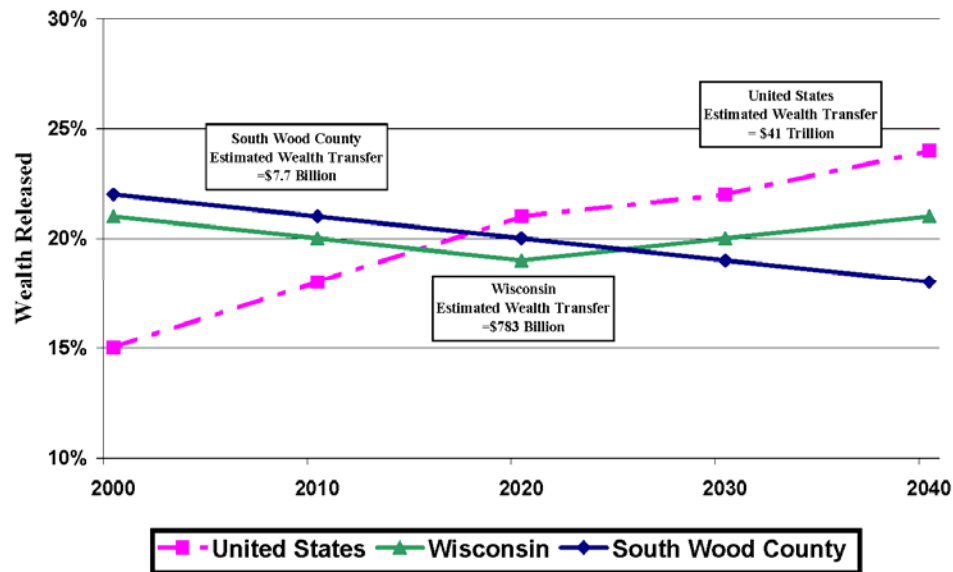
Program	Outcome	Activity	Output/ Indicators - Year 3				
			1st Quarter (4/1-6/30/06)	2nd Quarter (7/1-9/30/06)	3rd Quarter (10/1-12/31/06)	4th Quarter (1/1-3/31/07)	Total
Community Funds	To create individual community charitable funds which provide a permanent source of funding to support local projects that improve life for community residents.	- Announce fund opportunity * Media coverage					
	To foster self-reliance and empower local citizens to determine charitable needs and award grants that support community needs.	- Create seven active and knowledgeable Community Fund Advisory Committees * Fund Committees * Fund Committee members (average number) - Establish training schedule * Training sessions * Participants - Encourage local community improvement * Grant applications * Grant awards	7 42  0 0 8 7	7 39  0 0 10 3	7 41  5 20 2 7	7 41  1 7 3 0	7 41  6 27 23 17
	To increase charitable assets for the benefit of individual communities.	- Create Community Funds * Funds created * Donors - Create Community Fund brochures * Community brochures * Brochures available - Announce Barker-Mead matching opportunity  * Media coverage - Encourage additional matching opportunities  * Additional match opportunities generated	  59    0  0	  36    4  2	  250    17  0	  12    7  0	  357    28  2
	To increase knowledge and presence of CFSWC within individual communities.	- Publicize Community Funds * Media coverage	7	7	22	8	44

Program	Source	Comments/Observations	Outcome - Benefit/Change				
			Behavior	Knowledge	Skills	Attitudes	Status
Community Funds	Tom Marshall Wisconsin Rapids Area Progress Fund Chair	Re: "Warm Your Heart, Warm Your Community" Coffee Day "We would like to again express our very sincere gratitude to those that came out to purchase a beverage and to the five locally owned businesses for their support. It is outstanding to see local businesses working together to make things happen in our area."	X			X	
	Sharon McCray Town of Rome Progress Fund Committee Member	Re: Garage Sale site map sale "Our goal is to make contact with as many people as possible and offer them something useful for a small fee to help build Rome's Community Fund."		X		X	
	Ruth Cline Vesper Area Progress Fund Committee Member	"Our gifts to the fund will be returned to our community forever in the form of community improvements grants."		X			X
	Ruth Moody Nekoosa Area Progress Fund Committee Chair	"The beauty of an endowment fund is its ability to grow in principal while giving out grants every year."  "Future grants may be used for projects such as signage, beautification, environmental education and historical restoration, and who knows what else."		X			X
	Marshall Buehler Port Edwards Progress Initiative Volunteer	"Congratulations are in order for village of Port Edwards residents since they met their financial goal of raising \$20,000 for the Port Progress Fund. We look forward to working with clubs, organizations and even individuals to carry out community improvement projects (with these funds)."	X			X	X
	Kathy Hartjes Rudolph Progress Fund Committee Member	"It's a good feeling to give money directly to your community - money that will be benefiting your hometown long after you're gone."	X		X	X	



# Transfer of Wealth





“No matter what your age, making arrangements for the future is important. You want to make sure that you have provided for the future of your children and other family members. If you make an investment in your community’s future as well, you are helping to keep the south Wood County area a caring, stable place where your children will be able to build a life even better than yours has been.” Kelly Lucas, President/CEO Community Foundation of South Wood County.

Pictured Above: South Wood County’s Wealth Transfer--A Likely Scenario

make it happen !

# CommunityProgress

INITIATIVE

Program	Narrative Summary
Transfer of Wealth	<p>Results from the “Wealth in South Wood County Study” commissioned by Community Foundation of South Wood County were released on 7/7/2005 and are available on two websites: <a href="http://cfswc.org">cfswc.org</a> and <a href="http://progressinitiative.com">progressinitiative.com</a>. The Donors Forum of Wisconsin and statewide certified community foundations released the "statewide transfer of wealth study" results on 9/7/2006. Since July of 2005, transfer of wealth continues to be an example that the Community Foundation and the Progress Initiative use when discussing how to create a strong and prosperous community through wealth creation and retention. Wealth doesn't refer to only those individuals or families with significant estates; wealth is defined as assets that can be kept within the community – investing in the future of the place that you call “home” for many generations of residents to come. The Community Foundation continues to reinforce the slogan, "Plant the Seed - Build a Stronger Community" in its communications; this slogan is strongly tied to the transfer of wealth strategy of retaining and building local assets.</p>

Program	Outcome	Activity	Output/ Indicators - Cumulative				
			Year 1	Year 2	Year 3	Total	
Transfer of Wealth	To educate the community and prospective donors about opportunities inherent in transfer of wealth to build community assets.	- Transfer of Wealth study conducted by Center for Rural Entrepreneurship and Nebraska Community Foundation		1		1	
		- "Plant the Seed: Endow Your Community" marketing and public relations plan developed, to include:					
		* Community information sessions/Annual meeting		1	1	2	
		* Mass media marketing news releases		43		43	
		* Professional advisor education events		1	1	2	
		* Professional advisor individual meetings		4	4	8	
		* Speakers Bureau		5	6	11	
		-Increase giving to community charitable endowments:					
		* General marketing news releases			129	47	176
		* SWC Nonprofit Council			3	2	5
		* Education for nonprofits			2	3	5
		- Increase giving to Community Foundation administered endowments:					
		* Community Progress Fund donations			314	443	757
* Community information sessions			7	28	35		
* Daily Tribune articles			10	44	54		

Program	Outcome	Activity	Output/ Indicators - Year 1				
			1st Quarter <small>(4/1-6/30/04)</small>	2nd Quarter <small>(7/1-9/30/04)</small>	3rd Quarter <small>(10/1-12/31/04)</small>	4th Quarter <small>(1/1-3/31/05)</small>	Total
Transfer of Wealth	To educate the community and prospective donors about opportunities inherent in transfer of wealth to build community assets.	<ul style="list-style-type: none"> <li>- Transfer of Wealth study conducted by Center for Rural Entrepreneurship and Nebraska Community Foundation</li> <li>- "Plant the Seed: Endow Your Community" marketing and public relations plan developed, to include:               <ul style="list-style-type: none"> <li>* Community information sessions/Annual meeting</li> <li>* Mass media marketing news releases</li> <li>* Professional advisor education events</li> <li>* Professional advisor individual meetings</li> <li>* Speakers Bureau</li> </ul> </li> <li>-Increase giving to community charitable endowments:               <ul style="list-style-type: none"> <li>* General marketing news releases</li> <li>* SWC Nonprofit Council</li> <li>* Education for nonprofits</li> </ul> </li> <li>- Increase giving to Community Foundation administered endowments:               <ul style="list-style-type: none"> <li>* Community Progress Fund donations</li> <li>* Community information sessions</li> <li>* Daily Tribune articles</li> </ul> </li> </ul>					

Program	Outcome	Activity	Output/ Indicators - Year 2				
			1st Quarter (4/1-6/30/05)	2nd Quarter (7/1-9/30/05)	3rd Quarter (10/1-12/31/05)	4th Quarter (1/1-3/31/06)	Total
Transfer of Wealth	To educate the community and prospective donors about opportunities inherent in transfer of wealth to build community assets.	- Transfer of Wealth study conducted by Center for Rural Entrepreneurship and Nebraska Community Foundation	1				1
		- "Plant the Seed: Endow Your Community" marketing and public relations plan developed, to include:					
		* Community information sessions/Annual meeting		1			1
		* Mass media marketing news releases	43	0	0	0	43
		* Professional advisor education events	1	0	0	0	1
		* Professional advisor individual meetings	1	1	1	1	4
		* Speakers Bureau	1	1	2	1	5
		-Increase giving to community charitable endowments:					
		* General marketing news releases	0	43	43	43	129
		* SWC Nonprofit Council	1	0	1	1	3
		* Education for nonprofits	0	0	1	1	2
		- Increase giving to Community Foundation administered endowments:					
		* Community Progress Fund donations	45	149	102	18	314
* Community information sessions	0	0	6	1	7		
* Daily Tribune articles	0	0	0	10	10		

Program	Outcome	Activity	Output/ Indicators - Year 3					
			1st Quarter (4/1-6/30/06)	2nd Quarter (7/1-9/30/06)	3rd Quarter (10/1-12/31/06)	4th Quarter (1/1-3/31/07)	Total	
Transfer of Wealth	To educate the community and prospective donors about opportunities inherent in transfer of wealth to build community assets.	- Transfer of Wealth study conducted by Center for Rural Entrepreneurship and Nebraska Community Foundation						
		- "Plant the Seed: Endow Your Community" marketing and public relations plan developed, to include:						
		* Community information sessions/Annual meeting		1				1
		* Mass media marketing news releases						
		* Professional advisor education events	1	0	0	0	1	
		* Professional advisor individual meetings	1	1	1	1	4	
		* Speakers Bureau	1	2	2	1	6	
		-Increase giving to community charitable endowments:						
		* General marketing news releases	12	10	13	12	47	
		* SWC Nonprofit Council	1	1	0	0	2	
		* Education for nonprofits	1	0	2	0	3	
		- Increase giving to Community Foundation administered endowments:						
* Community Progress Fund donations	68	85	273	17	443			
* Community information sessions	7	7	7	7	28			
* Daily Tribune articles	7	7	22	8	44			

Program	Source	Comments/Observations	Outcome - Benefit/Change				
			Behavior	Knowledge	Skills	Attitudes	Status
Transfer of Wealth	Deborah Fugenschuh President, Donors Forum of Wisconsin	"We hope this study will start conversations. We want people to think about what is most important to them in their communities. We hope they'll consider making a charitable investment now or through their wills to enhance the quality of life here."				X	X
	Kelly Lucas President/CEO, Community Foundation of South Wood County	<p>" . . . An imminent community-wide opportunity for all residents. Think of what \$3 per year of new resources could mean for our region. Within a decade, it could mean improved health and human services, new arts and cultural endeavors, increased recreation and sports attractions, programs to help entrepreneurs, increased economic development, and so much more."</p> <p>"In planning the components that would form the <i>Community Progress Initiative</i>, we recognized that the retention of assets that are transferred from one generation to the next is a critical resource to building a strong community for the future and for supporting community progress. As people retire or relocate, or their children and grandchildren move away, the assets that were earned and invested in central Wisconsin also leave the area. We ask that residents consider their community as another 'child' - and think about long-term charitable giving as a way to support that 'child.' This type of planned giving will serve future generations and give them ongoing resources to create a community that attracts more young people."</p>		X			X

make it happen !

**Community** **Progress**

**INITIATIVE**

# Incubator Study





“The community itself is a great resource for generating creative ideas for improvement. What is usually missing is an easy to access central collection point that allows for discussion and growth of an idea. This is the goal of the Ideas Incubator.” Mark Swanson, Vice President/Chief Technology Officer, Renaissance Learning, Inc.

Pictured Above: The Ideas Incubator logo

make it happen !

# Community Progress

## INITIATIVE

Program	Narrative Summary
Incubator Study	<p>The Incubator Study was completed to assess the need for an incubator in the South Wood County area. The Study was completed and the findings indicated there is not a need for incubator space; however, there is a need for the support services that an incubator provides. These support services are currently being provided through the Small Business Cluster's activities and programming; therefore, the implementation of the Study findings are being covered by this cluster's activity.</p>

Program	Outcome	Activity	Output/ Indicators - Cumulative			
			Year 1	Year 2	Year 3	Total
Incubator Study	To assess feasibility of and need for an incubator facility in the South Wood County area to provide support and incentives for business development.	- Conduct fact-finding study		1		1
		* Implemented recommendations in study		4		4
		* Identified financing alternatives		2		2
		- Research established incubator centers		10		10
		- Assess application to South Wood County				
* Identified partners		3		3		
* Available sites and buildings		10		10		

Program	Outcome	Activity	Output/ Indicators - Year 1				
			1st Quarter <small>(4/1-6/30/04)</small>	2nd Quarter <small>(7/1-9/30/04)</small>	3rd Quarter <small>(10/1-12/31/04)</small>	4th Quarter <small>(1/1-3/31/05)</small>	Total
Incubator Study	To assess feasibility of and need for an incubator facility in the South Wood County area to provide support and incentives for business development.	<ul style="list-style-type: none"> <li>- Conduct fact-finding study               <ul style="list-style-type: none"> <li>* Implemented recommendations in study</li> <li>* Identified financing alternatives</li> </ul> </li> <li>- Research established incubator centers</li> <li>- Assess application to South Wood County               <ul style="list-style-type: none"> <li>* Identified partners</li> <li>* Available sites and buildings</li> </ul> </li> </ul>					

Program	Outcome	Activity	Output/ Indicators - Year 2				
			1st Quarter <small>(4/1-6/30/05)</small>	2nd Quarter <small>(7/1-9/30/05)</small>	3rd Quarter <small>(10/1-12/31/05)</small>	4th Quarter <small>(1/1-3/31/06)</small>	Total
Incubator Study	To assess feasibility of and need for an incubator facility in the South Wood County area to provide support and incentives for business development.	- Conduct fact-finding study			1		1
		* Implemented recommendations in study			0	4	4
		* Identified financing alternatives			2	0	2
		- Research established incubator centers	10				10
		- Assess application to South Wood County					
* Identified partners			1	2	3		
* Available sites and buildings			10	0	10		

Program	Outcome	Activity	Output/ Indicators - Year 3				
			1st Quarter (4/1-6/30/06)	2nd Quarter (7/1-9/30/06)	3rd Quarter (10/1-12/31/06)	4th Quarter (1/1-3/31/07)	Total
Incubator Study	To assess feasibility of and need for an incubator facility in the South Wood County area to provide support and incentives for business development.	<ul style="list-style-type: none"> <li>- Conduct fact-finding study               <ul style="list-style-type: none"> <li>* Implemented recommendations in study</li> <li>* Identified financing alternatives</li> </ul> </li> <li>- Research established incubator centers</li> <li>- Assess application to South Wood County               <ul style="list-style-type: none"> <li>* Identified partners</li> <li>* Available sites and buildings</li> </ul> </li> </ul>					

Program	Source	Comments/Observations	Outcome - Benefit/Change				
			Behavior	Knowledge	Skills	Attitudes	Status
Incubator Study	Mark Swanson Vice President/Chief Technology Officer Renaissance Learning, Inc.	"The community itself is a great resource for generating creative ideas for improvement. What is usually missing is an easy to access central collection point that allows for discussion and growth of an idea. This is the goal of the Ideas Incubator."		X			
	Todd Wiedenhaft New E-conomies Cluster Member	"This website, <a href="http://www.ideasincubator.org">www.ideasincubator.org</a> is a great tool to match entrepreneurs and investors in the Heart of Wisconsin area."		X	X		

make it happen !

# Community Progress

INITIATIVE

## Study Tours





“This [trip to Ireland] was a tremendous opportunity to see how Ireland’s economy is similar to the state of Wisconsin. We learned the importance of relationships and collaboration, education, entrepreneurship, and grassroots community involvement in creating a thriving culture.” Karin Mast, participant of the Ireland Study Tour.


Pictured Above: Participants of the Ireland Study Tour posed for a photo at Mizen Head Visitor Center – a lighthouse owned by the community with revenue supporting community improvement projects.

make it happen !

# CommunityProgress

## INITIATIVE

Program	Narrative Summary
Study Tours	<p>Study Tours offer a way for people to gain new ideas, establish new relationships and leadership skills. There have been a number of shorter study tours to communities by the individual cluster teams, which have provided tremendous value in sparking and exploring feasibility of new business niches. Study tours have been taken to Red Wing, Minnesota, Australia, Fox Valley, Rhinelander, North Carolina, Ireland and Beloit. The tours examine innovation, community building and regional branding, in addition to how various cluster activities link together to create synergy and greater impact.</p>

Program	Outcome	Activity	Output/ Indicators - Cumulative			
			Year 1	Year 2	Year 3	Total
Study Tours	To bring new ideas to the South Wood County area by exploring best practice case studies and global opportunities.	- Site visits to locations that have applied innovative thinking and leadership * Tours * Participants	2 17	1 6	4 61	7 84
	To develop new business opportunities, increase civic engagement, foster new relationships and build community leadership to spur innovative economic development and cultural change.	- Public presentations by participants - Scholarships - Best practice ideas applied in community	4 4 0	  4	6 25 3	10 29 7

Program	Outcome	Activity	Output/ Indicators - Year 1				
			1st Quarter <small>(4/1-6/30/04)</small>	2nd Quarter <small>(7/1-9/30/04)</small>	3rd Quarter <small>(10/1-12/31/04)</small>	4th Quarter <small>(1/1-3/31/05)</small>	Total
Study Tours	To bring new ideas to the South Wood County area by exploring best practice case studies and global opportunities.	- Site visits to locations that have applied innovative thinking and leadership * Tours * Participants			2 17	0 0	2 17
	To develop new business opportunities, increase civic engagement, foster new relationships and build community leadership to spur innovative economic development and cultural change.	- Public presentations by participants - Scholarships - Best practice ideas applied in community			0 4 0	4 0 0	4 4 0

Program	Outcome	Activity	Output/ Indicators - Year 2				
			1st Quarter (4/1-6/30/05)	2nd Quarter (7/1-9/30/05)	3rd Quarter (10/1-12/31/05)	4th Quarter (1/1-3/31/06)	Total
Study Tours	To bring new ideas to the South Wood County area by exploring best practice case studies and global opportunities.	- Site visits to locations that have applied innovative thinking and leadership * Tours * Participants	0 0	0 0	0 0	1 6	1 6
	To develop new business opportunities, increase civic engagement, foster new relationships and build community leadership to spur innovative economic development and cultural change.	- Public presentations by participants - Scholarships - Best practice ideas applied in community	0	1	1	2	4

Program	Outcome	Activity	Output/ Indicators - Year 3				
			1st Quarter (4/1-6/30/06)	2nd Quarter (7/1-9/30/06)	3rd Quarter (10/1-12/31/06)	4th Quarter (1/1-3/31/07)	Total
Study Tours	To bring new ideas to the South Wood County area by exploring best practice case studies and global opportunities.	- Site visits to locations that have applied innovative thinking and leadership * Tours * Participants	1 7	0 0	2 33	1 21	4 61
	To develop new business opportunities, increase civic engagement, foster new relationships and build community leadership to spur innovative economic development and cultural change.	- Public presentations by participants - Scholarships - Best practice ideas applied in community	0 0 1	0 0 1	0 25 1	6 0 0	6 25 3

Program	Source	Comments/Observations	Outcome - Benefit/Change				
			Behavior	Knowledge	Skills	Attitudes	Status
Study Tours	Dean Ryerson Ireland Study Tour participant	<p>Presentation to Industry Cluster and Progress Team Workshop</p> <p>"In Ireland, we heard about relationships and common interests. There's a strong parallel to what we'd like to see here."</p> <p>"We heard it takes time . . . We've been at this (CPI) three years. In Ireland, they said they've been at it for 15 years and they're just starting to show benefits of all the work."</p> <p>"Our challenges are: creating a shared vision, money and impatience. We're certainly on the right track."</p>	X	X		X	X
	Jeanne Weymouth North Carolina Study Tour participant	<p>Presentation to Industry Cluster and Progress Team Workshop</p> <p>"We visited a landfill . . . It turned out to be gorgeous! The landfill generated recycled energy for an art incubator and greenhouse. It was very inspiring."</p>	X	X		X	
	Bill Lubing Australia Study Tour participant	"Local entrepreneurs put together a gourmet deli trail, offering opportunities for visitors to map out a day trip where they could sample a variety of the regions gourmet offerings."		X			
	Arlene Scalzo Australia Study Tour participant	"I've always looked forward to 'change'-knowing that it's the only constant factor in our society. Participating in the Study Tour to Australia now leads me in how to look at an even bigger picture than before. Think big, plan for change and be adaptable. Thinking globally is advantageous to help you plan and be ready for changes."		X		X	
	Heather Wessling Beloit Study Tour participant	"The Study Tours that are sponsored by the Heart of Wisconsin (and Community Foundation) are valuable. Creative land use options and citizen support spurred local investors to take risks and create their own 'Community Progress Initiative' in Beloit. Beloit's parallels to Wisconsin Rapids were obvious to me from the start. We simply begin by taking a risk in ourselves."		X		X	



## **Angel Investor Network and Loan Funds**





The Business Angel Investor Network connects new entrepreneurs with successful entrepreneurs who serve as mentors to help with business decisions. It assists with equity financing of business start-ups and expansions that produce a product or service exported beyond Central Wisconsin.

Pictured Above: CAT Ski users participate in a Championship race  
CAT Ski received funding from the Central Wisconsin Business Angels during Year 3 of the Community Progress Initiative.

make it happen !  
**CommunityProgress**  
 INITIATIVE

Program	Narrative Summary
Angel Investor Network and Loan Funds	<p>The Central Wisconsin Business Angels network provides equity capital to entrepreneurial projects with high growth potential. Access to capital is important for business financial packaging. The CWBA and the Heart of Wisconsin Revolving Loan Fund increases the capital resources available for business development. The Revolving Loan Fund established with federal funds assists in financing businesses based on job creation.</p> <p>The CWBA has expanded in membership and sophistication, investing in several projects that have resulted in new business start-ups and job creation. In addition to their financial assistance, the business experience they also bring to the table provides new start-ups and expansions with management expertise that can be helpful in getting the companies off the ground. Of 50 projects evaluated, CWBA members have made 8 investments at over \$1.7 million. In 5 years, CWBA projects that these investments will create 770 jobs. Angel Investors also provide the ability of the business to leverage the angel funds (2X) with additional funds provided through state, county, and local bank loans.</p>

Program	Outcome	Activity	Output/ Indicators - Cumulative			
			Year 1	Year 2	Year 3	Total
Angel Investor Network and Loan Funds	To enable new businesses to get started and existing businesses to expand, creating new jobs in the South Wood County area.	- Angel Investor Network created * Angel Investors * Projects submitted for funding * Deals/investments approved * Business start-up * Business start-up jobs created * Business expansion * Business expansion jobs created - Raise funds for Revolving Loan Fund - Revolving Loans: * Applications received * Loans made * Loan fund amounts * Business start-up * Business start-up jobs created * Business expansion * Business expansion jobs created		7 10 3 5 17 1 23	11 50 8 5 22 3 15	11 60 11 10 39 4 38 \$430,000  1 1 \$190,000 2 32 1 5

Program	Outcome	Activity	Output/ Indicators - Year 1				
			1st Quarter <small>(4/1-6/30/04)</small>	2nd Quarter <small>(7/1-9/30/04)</small>	3rd Quarter <small>(10/1-12/31/04)</small>	4th Quarter <small>(1/1-3/31/05)</small>	Total
Angel Investor Network and Loan Funds	To enable new businesses to get started and existing businesses to expand, creating new jobs in the South Wood County area.	<ul style="list-style-type: none"> <li>- Angel Investor Network created               <ul style="list-style-type: none"> <li>* Angel Investors</li> <li>* Projects submitted for funding</li> <li>* Deals/investments approved</li> <li>* Business start-up</li> <li>* Business start-up jobs created</li> <li>* Business expansion</li> <li>* Business expansion jobs created</li> </ul> </li> <li>- Raise funds for Revolving Loan Fund</li> <li>- Revolving Loans:               <ul style="list-style-type: none"> <li>* Applications received</li> <li>* Loans made</li> <li>* Loan fund amounts</li> <li>* Business start-up</li> <li>* Business start-up jobs created</li> <li>* Business expansion</li> <li>* Business expansion jobs created</li> </ul> </li> </ul>					

Program	Outcome	Activity	Output/ Indicators - Year 2				
			1st Quarter (4/1-6/30/05)	2nd Quarter (7/1-9/30/05)	3rd Quarter (10/1-12/31/05)	4th Quarter (1/1-3/31/06)	Total
Angel Investor Network and Loan Funds	To enable new businesses to get started and existing businesses to expand, creating new jobs in the South Wood County area.	- Angel Investor Network created					
		* Angel Investors	5	5	5	7	7
		* Projects submitted for funding	2	2	2	4	10
		* Deals/investments approved	1	0	1	1	3
		* Business start-up	2	1	1	1	5
		* Business start-up jobs created	0	5	10	2	17
		* Business expansion	0	0	1	0	1
		* Business expansion jobs created	15	2	4	2	23
		- Raise funds for Revolving Loan Fund	\$0	\$0	\$430,000	\$0	\$430,000
		- Revolving Loans:					
		* Applications received	0	0	0	1	1
		* Loans made	1	0	0	0	1
		* Loan fund amounts	\$190,000	\$0	\$0	\$0	\$190,000
		* Business start-up	1	0	0	1	2
		* Business start-up jobs created	0	30	0	2	32
		* Business expansion	0	0	1	0	1
* Business expansion jobs created	0	0	0	5	5		



Program	Source	Comments/Observations	Outcome - Benefit/Change				
			Behavior	Knowledge	Skills	Attitudes	Status
Angel Investor and Loan Funds	Leon Ostrowski	"Ultimately this is their money that will support these projects, and they'll deal with the owners of those businesses or future businesses."				X	
	Richard Kenney	"I want to give back to the community by assisting others in business start-up or expansion, have fun in making investments that facilitate entrepreneurs to be successful and grow the local economy, while receiving an appropriate return for all the investors."	X			X	
	Connie Loden Revolving Loan Fund Administrator Heart of Wisconsin Business & Economic Alliance	"With assistance and encouragement from the Revolving Loan Fund Committee, businesses and industry will be able to upgrade, remodel or expand their present facilities in an effort to increase sales and develop a need for additional full-time employees or the retention of existing employees."		X	X		X

make it happen !

# Community Progress

INITIATIVE

## Contributing Staff





## ***Contributing Staff***

### **Heart of Wisconsin Business & Economic Alliance**

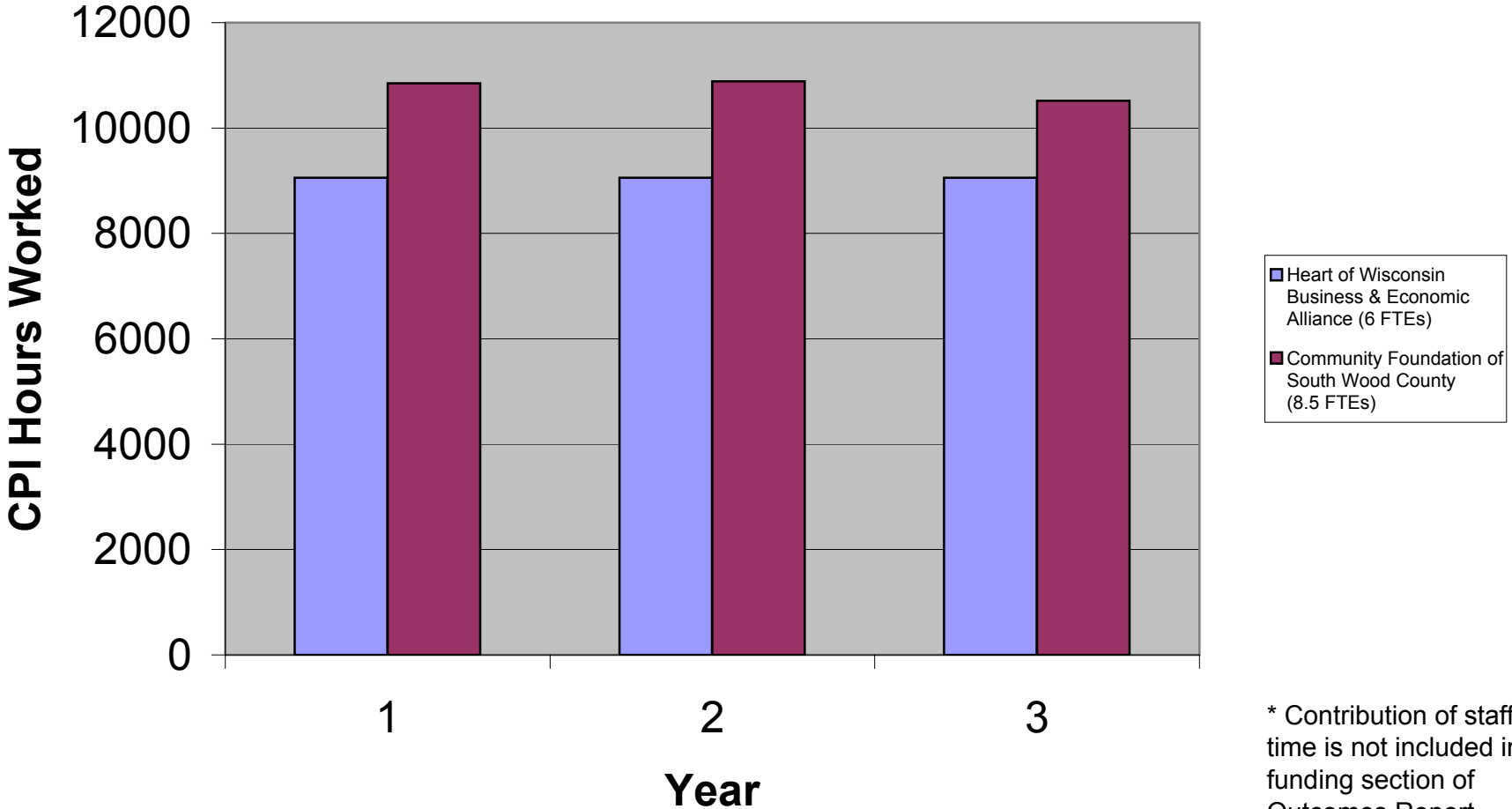
Connie Loden  
Jill Cavanaugh  
Krista Dhein  
Jill Fancher  
Wendy Haske  
Melissa Loken  
Brian Sauer  
Becky Steward  
Nan Taylor

### **Community Foundation of South Wood County**

Kelly Lucas  
Carol Davis  
Beth Knobeck  
Kathleen Krueger  
Matt Kublank  
Mary Olson  
Cheryl Posner  
Kim Shields  
Traci Stinebrink  
Deb Thomas  
M. Jill Thornburg  
Robin Villeneuve  
Dawn Vruwink  
Mary Wirtz

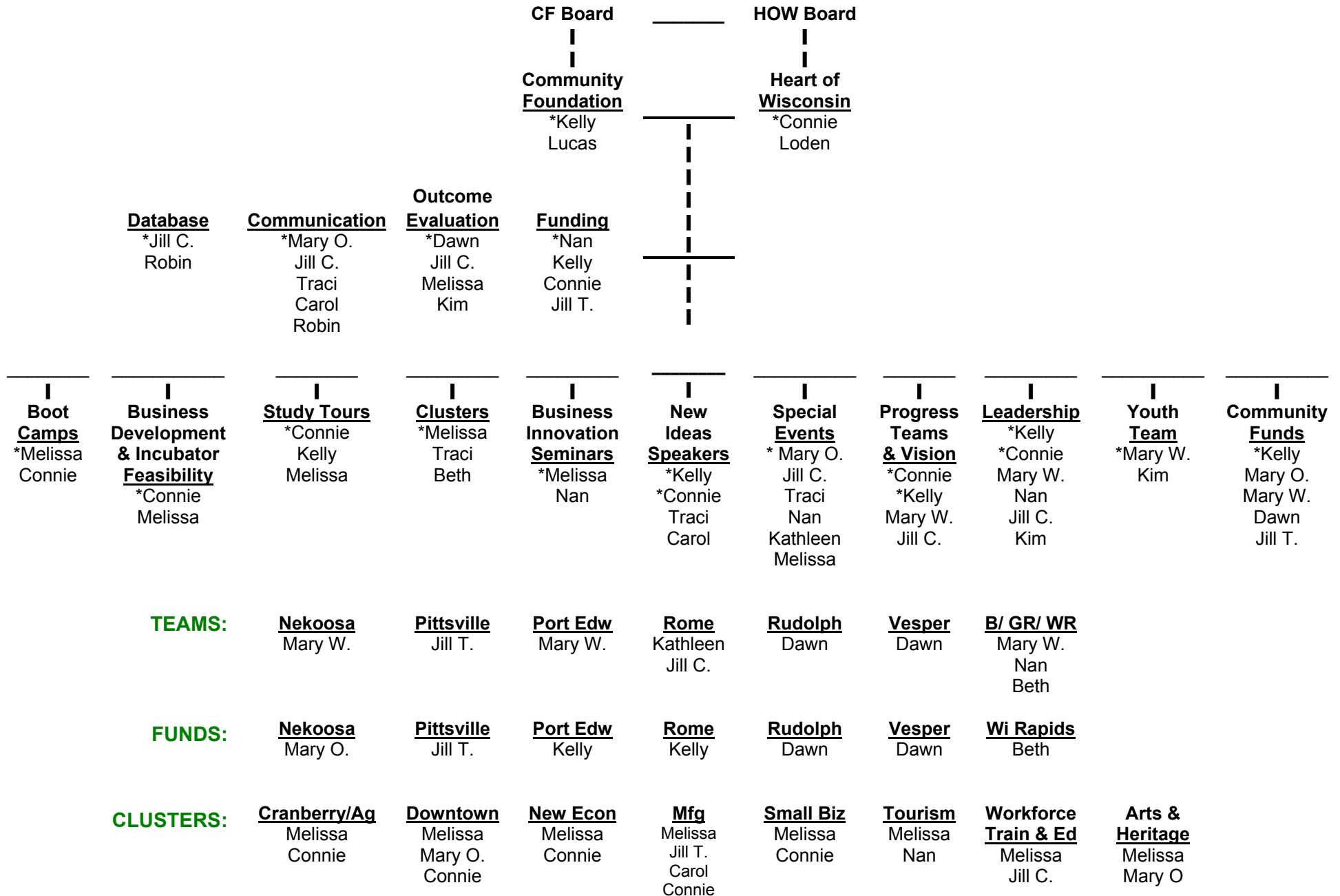
A Joint Initiative Between Heart of Wisconsin Business & Economic Alliance and Community Foundation of South Wood County

# Organizational Contribution of Staff & Administrative Support \*



\* Contribution of staff time is not included in funding section of Outcomes Report.

**FLOWCHART CPI Roles & Responsibilities March 31, 2007**





***Outcomes data in this report was gathered and compiled over the course of the Community Progress Initiative by the Outcomes Committee:***

Dawn Vruwink - Chair  
Melissa Loken  
Kim Shields

*Special thanks to Dawn Vruwink, Chair, and Kim Shields for coordinating, assembling and producing this report.*

**Published: December 2007**

**Report Contact:**

Dawn Vruwink, Program Officer  
Community Foundation of Greater South Wood County  
715-423-3863  
[dvruwink@cfswc.org](mailto:dvruwink@cfswc.org)

A Joint Initiative Between Heart of Wisconsin Business & Economic Alliance and Community Foundation of South Wood County